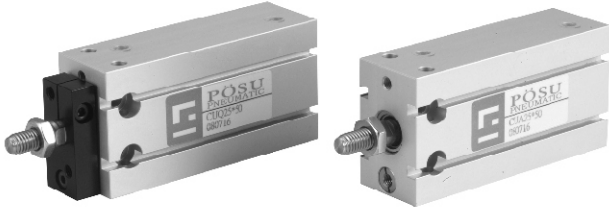


# CU系列 自由安裝氣缸

series ARBITRARY MOUNT CYLINDERS

PÖSU  
PNEUMATIC



- CU系列可附磁性感應。
- 氣缸六面皆可固定及安裝，節省安裝空間。
- CU series magnetic piston(optional).
- Space saving.

## 雙動氣缸 Double acting cylinders

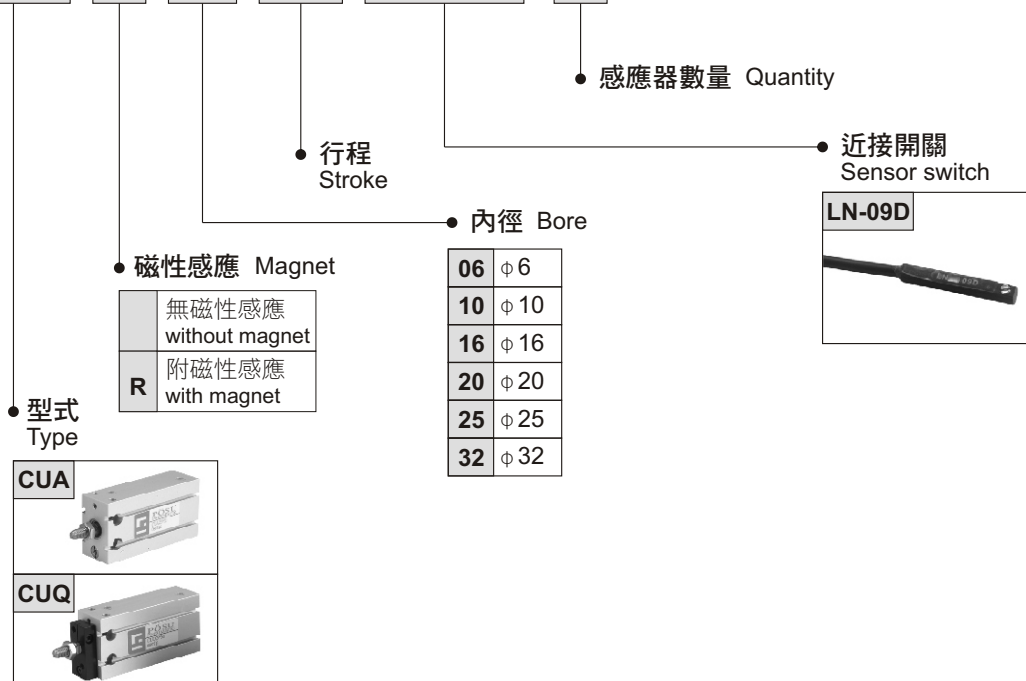
<b>CUA</b>	雙動標準型 DOUBLE ACTING-SINGLE END ROD TYPE	
<b>CUAR</b>	雙動型(附磁性感應) DOUBLE ACTING-SINGLE END ROD TYPE (piston with magnet)	
<b>CUQ</b>	雙動軸心不迴轉型 DOUBLE ACTING-DOUBLE NON-ROTATING ROD TYPE	
<b>CUQR</b>	雙動軸心不迴轉型(附磁性感應) DOUBLE ACTING-DOUBLE NON-ROTATING ROD TYPE (piston with magnet)	

## 規格表 Specifications

氣缸內徑 Bore sizes of cylinder (mm)	φ 6	φ 10	φ 16	φ 20	φ 25	φ 32
標準行程 Standard stroke (mm)	5,10,15,20,25,30			5,10,15,20,25,30,40,50		
雙動行程範圍 The range of stroke (mm)	最大30			最大50		
工作媒體 Power fluid	已濾清之壓縮空氣(潤滑或未潤滑) Filtered air with or without lubrication					
使用壓力範圍 The range of pressure (kgf/cm <sup>2</sup> )	3 ~ 7	1.5 ~ 7		1 ~ 7		
使用溫度範圍 The range of temperature (°C)	-10 ~ 60					

## 訂購代號 Order No.

**CUA** **R** **20** **10** **LN-09D** × **2**



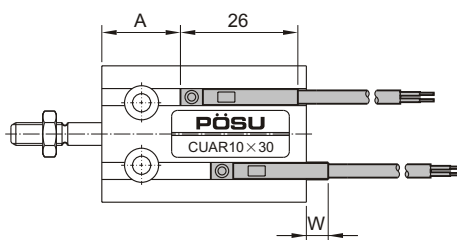
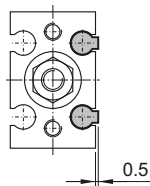
行程規格表 Cylinder bore and stroke

型式 Type	內徑 Bore	標準行程 standard stroke										標準行程(附磁性感應) with magnet cylinder stroke									
		5	10	15	20	25	30	35	40	45	50	5	10	15	20	25	30	35	40	45	50
CUA- 雙動單軸型 Double acting - Single end rod	φ 6	—	—	—	—	—	—	—	—	—	—	●	●	●	●	●	●	—	—	—	—
	φ 10	—	—	—	—	—	—	—	—	—	—	●	●	●	●	●	●	—	—	—	—
	φ 16	●	●	●	●	●	●	—	●	—	●	●	●	●	●	●	●	—	●	—	●
	φ 20	●	●	●	●	●	●	—	●	—	●	●	●	●	●	●	●	—	●	—	●
	φ 25	●	●	●	●	●	●	—	●	—	●	●	●	●	●	●	●	—	●	—	●
	φ 32	●	●	●	●	●	●	—	●	—	●	●	●	●	●	●	●	—	●	—	●
CUQ- 雙動雙軸型 Double acting - Double end rod	φ 16	●	●	●	●	●	—	●	—	●	●	●	●	●	●	●	—	●	—	●	
	φ 20	●	●	●	●	●	—	●	—	●	●	●	●	●	●	●	—	●	—	●	
	φ 25	●	●	●	●	●	—	●	—	●	●	●	●	●	●	●	—	●	—	●	
	φ 32	●	●	●	●	●	—	●	—	●	●	●	●	●	●	●	—	●	—	●	

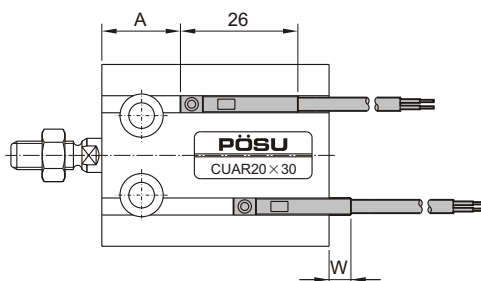
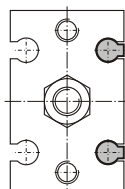
近接開關 Sensor switches 尺寸圖 Dimension φ 6~ φ 32

CUAR

缸徑 φ 6, φ 10



缸徑 φ 16~ φ 32



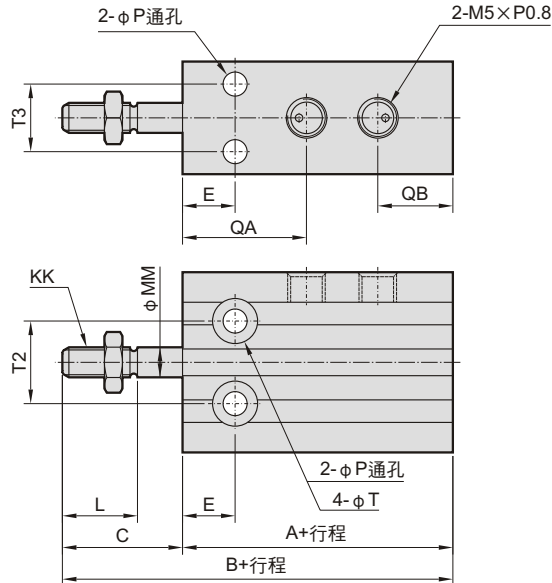
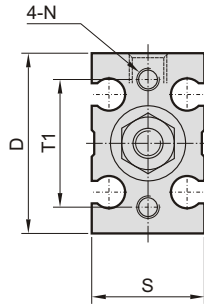
Bore	近接開關型式 sensor switch	A	W
φ 6	LN09D	16.5	9.5
φ 10	LN09D	15.5	5.5
φ 16	LN09D	19	5
φ 20	LN09D	23	3
φ 25	LN09D	25.5	1.5
φ 32	LN09D	26.5	0.5

尺寸圖 Dimension  $\phi 6 \sim \phi 32$

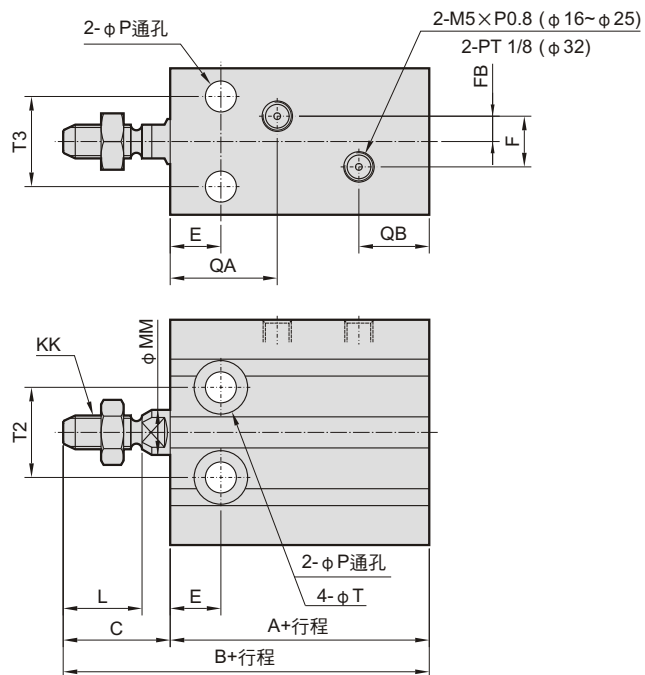
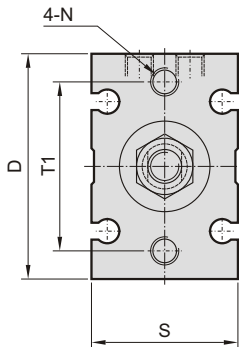
**CUA / CUAR 雙動標準型**  
Double acting - single end rod type



Bore  $\phi 6, \phi 10$



Bore  $\phi 16 \sim \phi 32$

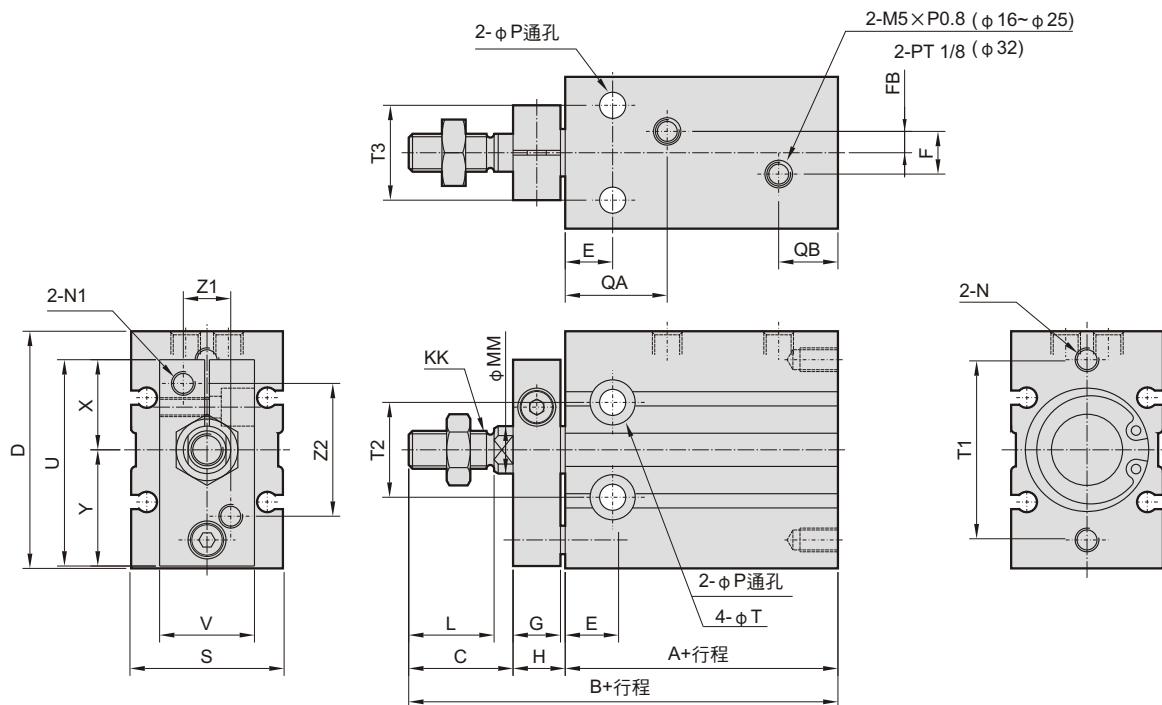


Bore	行程	CUA		CUAR		C	D	E	F	FB	L	KK	MM	N	P	QA	QB
		A	B	A	B												
$\phi 6$	5~30	—	—	33	46	13	22	7	—	—	7	M3×P0.5	3	M3×P0.5深5	3.2	15	10
$\phi 10$	5~30	—	—	36	52	16	24	7	—	—	10	M4×P0.7	4	M3×P0.5深5	3.2	16.5	10
$\phi 16$	5~50	30	46	40	56	16	32	7	4	2	12.5	M5×P0.8	6	M4×P0.7深6	4.5	14.5	11.5
$\phi 20$	5~50	36	55	46	65	19	40	9	9	4.5	14	M6×P1.0	8	M5×P0.8深8	5.5	19	12.5
$\phi 25$	5~50	40	63	50	73	23	50	10	9	4.5	18	M8×P1.25	10	M5×P0.8深8	5.5	21.5	13
$\phi 32$	5~50	42	69	52	79	27	62	11	13.5	4.5	22	M10×P1.25	12	M6×P1.0深9	6.5	23	12.5

Bore	行程	S	T	T1	T2	T3
$\phi 6$	5~30	13	$\phi 6 \times \text{深} 4.8$	17	10	7
$\phi 10$	5~30	15	$\phi 6 \times \text{深} 5$	18	11	9
$\phi 16$	5~50	20	$\phi 7.6 \times \text{深} 6.5$	25	14	12
$\phi 20$	5~50	26	$\phi 9.3 \times \text{深} 8$	30	16	16
$\phi 25$	5~50	32	$\phi 9.3 \times \text{深} 9$	38	20	20
$\phi 32$	5~50	40	$\phi 11 \times \text{深} 11.5$	48	24	24

尺寸圖 Dimension  $\phi 16 \sim \phi 32$

**CUQ / CUQR** 雙動軸心不迴轉型  
Double acting - double non-rotating rod type



Bore	行程	CUQ		CUQR		C	D	E	F	FB	G	H	L	KK	MM	N	N1
		A	B	A	B												
$\phi 16$	5~50	30	56	40	66	17	32	7	4	2	8	9	12.5	M5×P0.8	6	M4×P0.7深6	M4
$\phi 20$	5~50	36	65	46	75	20	40	9	9	4.5	8	9	14	M6×P1.0	8	M5×P0.8深8	M4
$\phi 25$	5~50	40	73	50	83	22	50	10	9	4.5	10	11	18	M8×P1.25	10	M5×P0.8深8	M5
$\phi 32$	5~50	42	84	52	94	29	62	11	13.5	4.5	12	13	22	M10×P1.25	12	M6×P1.0深9	M5

Bore	行程	P	QA	QB	S	T	T1	T2	T3	U	V	X	Y	Z1	Z2
$\phi 16$	5~50	4.5	14.5	11.5	20	$\phi 7.6 \times \text{深} 6.5$	25	14	12	28	13	12.5	15.5	6	18
$\phi 20$	5~50	5.5	19	12.5	26	$\phi 9.3 \times \text{深} 8$	30	16	16	33	16	13.5	19.5	8	20
$\phi 25$	5~50	5.5	21.5	13	32	$\phi 9.3 \times \text{深} 9$	38	20	20	43.5	20	19	24.5	10	28
$\phi 32$	5~50	6.5	23	12.5	40	$\phi 11 \times \text{深} 11.5$	48	24	24	51.5	24	21	30.5	12	32

薄型氣壓缸