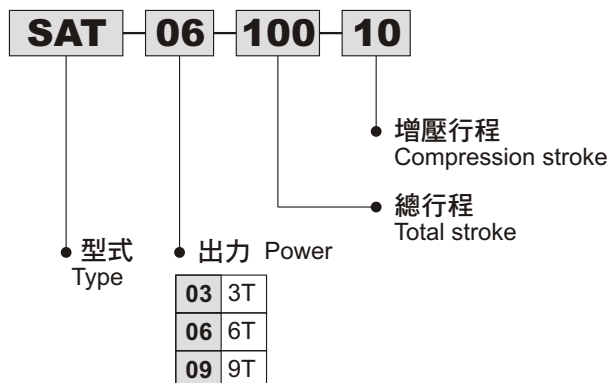


- 體積小、出力大。
- 規格種類齊全。
- 安裝時，空油轉換裝置必需高於作動缸。
- Compact size with great output force.
- With complete series of products.
- For installation, the pneumatic-hydraulic converter must be installed higher than the operated cylinder.

訂購代號 Order No.



規格表 Specifications

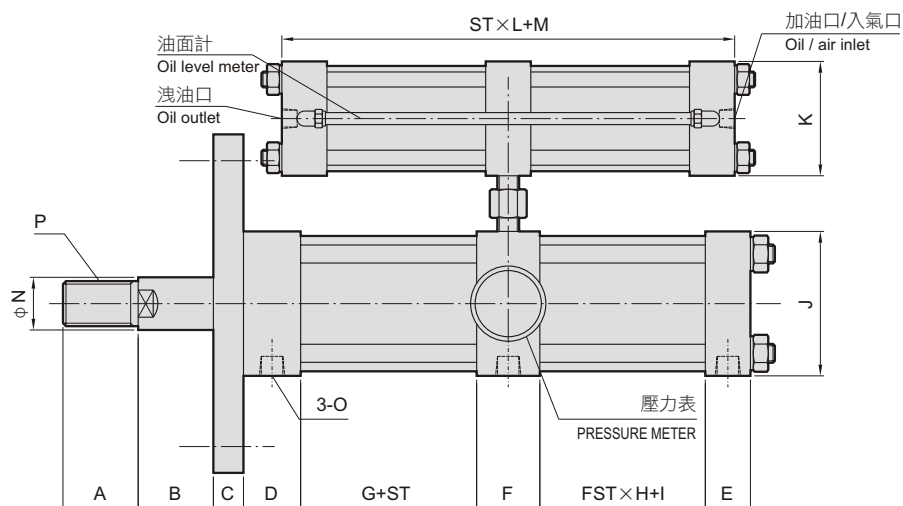
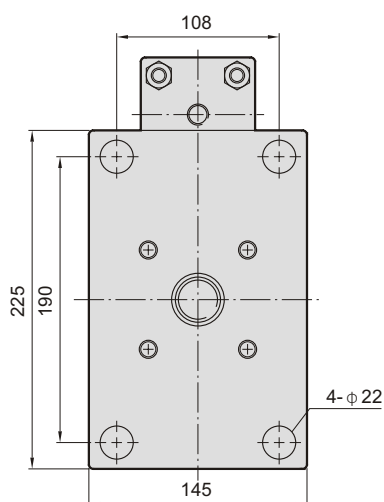
出力 Power (Kg)	3T, 6T, 9T
總行程 Total stroke (mm)	60,100,150
增壓行程 Enforce stroke (mm)	5,10,15,20
使用流體 Used fluid	空氣 Air
使用壓力範圍 Pressure range (kgf/cm ²)	0.7 ~ 9.9
使用速度範圍 Speed range (mm/s)	8 ~ 100
使用溫度範圍 Ambient temperature (°C)	-10 ~ 70

出力表 Force table

出力 Power	快速推進 Fast forward	快速回程 Fast backward	高推力前進 Compression forward
3T	180	129	2880
6T	300	226	5970
9T	470	375	9370

單位為公斤，空壓為6Kg/cm²
Unit: Kg, Air pressure: 6Kg/cm²

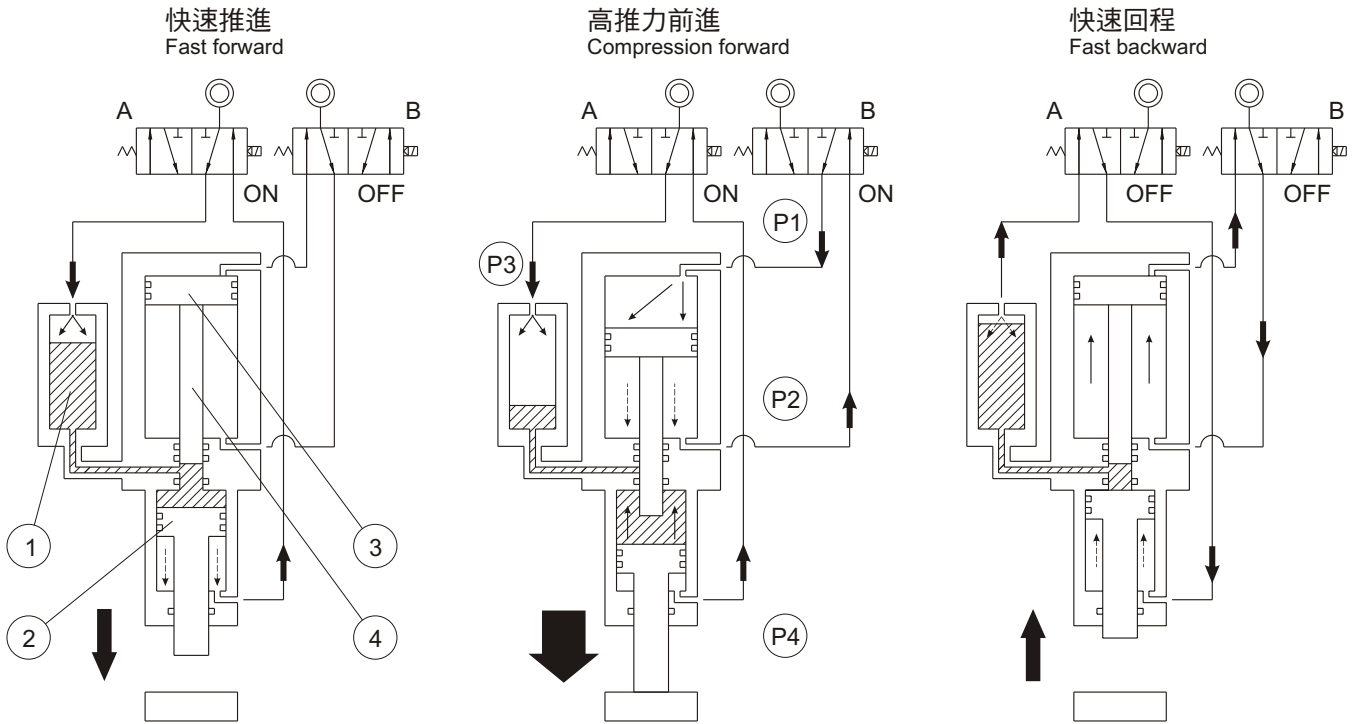
尺寸圖 Dimension



ST : 總行程 Total stroke FST : 增壓行程 Compression stroke

出力 Power	A	B	C	D	E	F	G	H	I	J	K	L	M	N	O	P
3T	50	50	20	38	30	42	57	11	55	96	76	2	101	35	PT 3/8"	M30×1.5
6T	60	60	24	40	36	42	65	14	63	114	76	2.9	101	40	PT 3/8"	M30×1.5
9T	60	60	30	42	38	45	75	21	63	130	96	2.9	120	45	PT 1/2"	M30×1.5

構造和操作原理 Structure and operation theory



當電磁閥A通電時壓縮空氣進入空油轉換桶①，使油壓活塞②向下快速推進。

When valve A turns on, the compressed air enters the converter cylinder ① to make the hydraulic piston ② move downward quickly.

當電磁閥B也通電時空壓活塞③推動增壓柱塞④，柱塞進入油壓缸內產生增壓作用與高推力。

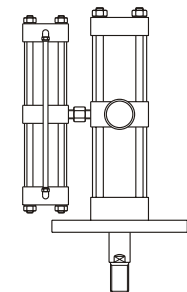
When valve B also turns on, air cylinder piston ③ pushes converter piston ④ to enter the hydraulic cylinder and make compression effect and great push force.

兩個電磁閥都不通電時，油壓缸和空壓缸快速退回原位，拉力為空壓拉力。

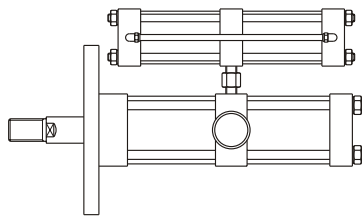
When the solenoid A and B both turn off, the hydraulic and air cylinder both quickly return with compression air pull force.

安裝方式 Installation

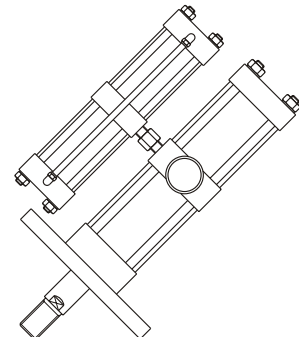
安裝時，空油轉換裝置必需高於作動缸
For installation, the pneumatic-hydraulic converter must be installed higher than the operated cylinder



垂直安裝
Vertical installation



水平安裝
Horizontal installation



傾斜安裝
Inclined installation