

精密型 微調行程氣缸

Precision Adjustable Stroke Cylinder

最小可調行程

0.01 m/m



CJD系列
Ø32 ~ Ø100



SND系列
Ø32 ~ Ø100



台灣新型專利 新型第M367993號

中國新型專利 ZL201220446235.X

穩速實業有限公司

POSU ENTERPRISE CO., LTD.

台南市永康區中正二街315號

NO.315, Zhongzheng 2nd St., Yongkang Dist., Tainan City 71047, Taiwan(R.O.C.)

TEL:886-6-2437788 FAX:886-6-2437523 E-mail:posutwn@ms59.hinet.net



POSU
Pneumatic Systems

精密型微調行程氣缸

Precision Adjustable Stroke Cylinder

SND系列-精密型微調行程氣缸/Precision Adjustable Stroke Cylinder

訂購代號/Order No.

SND - **R** - **50** x **125** - **B** - **S**

① ② ③ ④ ⑤ ⑥

FA - **LN-02A** x **2**

⑦ ⑧ ⑨

1 型式/Type



2 磁性感應/Magnet

無磁性感應 / Without Magnet
R 附磁性感應 / With Magnet

3 內徑/Bore

編號(Code)	32	40	50	63	80	100
尺寸(Size)	φ32	φ40	φ50	φ63	φ80	φ100

4 行程/Stroke

SND	5-500 mm
CJD	5-50 mm

5 軸端型式/Rod End Type



6 精密可調行程/Precision Adjustable Stroke

S	φ32~φ40	φ50~φ100
	可調35mm Adjustable 35mm	可調50mm Adjustable 50mm

7 SND用配件/Accessories For SND



8 SND用近接開關/Sensor Switch For SND



CJD用近接開關/Sensor Switch For CJD



9 感應器數量/Quantity

規格/Specifications

氣缸內徑/ Bore Sizes Of Cylinder (mm)	φ32	φ40	φ50	φ63	φ80	φ100
工作媒體/ Power Fluid	已濾清之壓縮空氣(潤滑或未潤滑) Filtered Air With Or Without Lubrication					
缸管材質/ Material Of Cylinder Barrel	鋁合金 Aluminum Extrusion, Anodised 20 Microns					
使用壓力範圍/ The range of pressure (kgf/cm ²)	1~10.5					
使用溫度範圍/ The range of temperature (°C)	-10~60					

特色/Features

SND系列 / SND Series

- ★ 高品質、耐久佳
氣壓缸管採用鋁合金材質，經過氧化鋁膜處理，更具耐磨、耐蝕性。
- ★ ISO標準規格
根據國際標準ISO-6431規格製作，屬無緊緊桿型，大多數零件可互相替換。
- ★ High Quality Long Service Life.
Hard anodised aluminium cylinder tubes offer a high resistance to corrosion and low internal friction.
- ★ ISO-6431 Standard Specification.
Conforms to ISO-6431 specification enabling worldwide interchangeability.

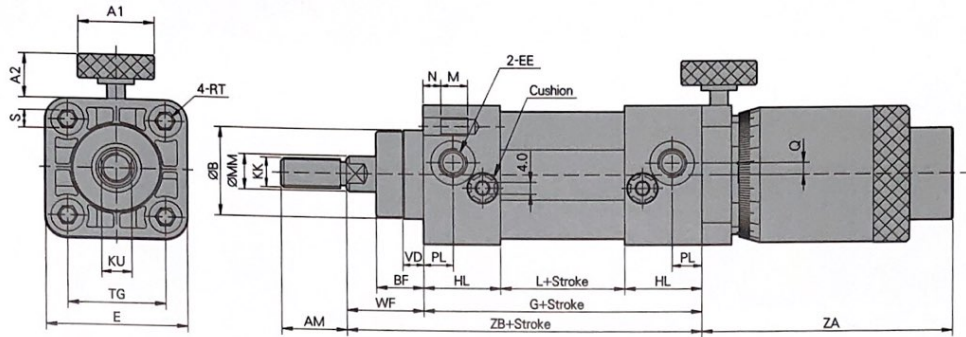
CJD系列 / CJD Series

- ★ 本系列外形輕薄，有效的節省空間
- ★ 於缸體擠製時，於外圍預留裝配槽；使感應開關在安裝固定及位置調整時，均極其簡單。
- ★ Ultra Compact, light weight and space saving cylinder.
- ★ Ideal for use in machinery where space is limited and incorporating sensor groove which enables flush fitting of sensors. Sensor can be mounted on any one of three faces.

特徵說明/Characteristic Description



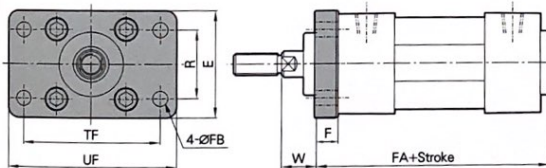
SND /SNDR 標準型/Standard Type Ø32-Ø100



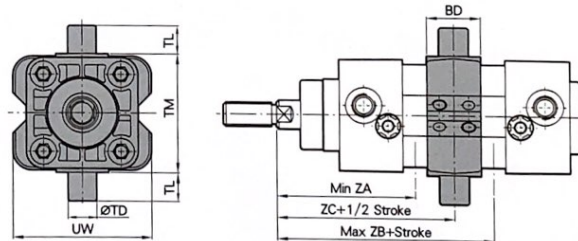
3D CAD 2D CAD 單位(Unit): m/m

Bore	AM	B	BF	E	EE	G	HL	L	KK	KU	M	MM	N	PL	RT	TG	VD	Q	S	WF	ZB	A1	A2	ZA			
																								MIN		MAX	
																								MIN	MAX	MIN	MAX
Ø32	22	30	16	47	G 1/8	94	26	42	M10 × P1.25	10	9	12	6	13	M6 × P1.0	32.5	7	4	6	26	120	25.4	15.7	Stroke ≤ 50		Stroke > 50	
																								82	109	89+Strok	116+Strok
Ø40	24	35	20	53	G 1/4	105	30	45	M12 × P1.25	14	9	16	6	15	M6 × P1.0	38	9	4	6	30	135	254	15.7	Stroke ≤ 65		Stroke > 65	
																								92	128	99+Strok	135+Strok
Ø50	32	40	25	65	G 1/4	106	30	46	M16 × P1.5	17	12	20	6	15	M8 × P1.25	46.5	11	4	8	37	143	30.5	20	Stroke ≤ 70		Stroke > 70	
																								120	168	125+Strok	175+Strok
Ø63	32	45	25	75	G 3/8	121	32	57	M16 × P1.5	17	12	20	6	16	M8 × P1.25	56.5	13	7	8	37	158	35.1	24	Stroke ≤ 70		Stroke > 70	
																								115	164	122+Strok	171+Strok
Ø80	40	45	32	95	G 3/8	128	38	52	M20 × P1.5	22	16	25	6	19	M10 × P1.5	72	15	7	10	46	174	35.3	26.2	Stroke ≤ 65		Stroke > 65	
																								115	164	122+Strok	171+Strok
Ø100	40	55	35	115	G 1/2	138	40	58	M20 × P1.5	22	16	25	6	20	M10 × P1.5	89	15	7	10	51	189	35.3	24.1	Stroke ≤ 65		Stroke > 65	
																								115	164	122+Strok	171+Strok

FA 前法蘭型/Front Flange



TC 砲耳型/Trunion



3D CAD 2D CAD 單位(Unit): m/m

Bore	E	F	FA	FB	TF	UF	W	R
Ø32	50	10	108	7	64	79	16	32
Ø40	55	10	120	9	72	90	20	36
Ø50	65	12	123	9	90	110	25	45
Ø63	75	12	138	9	100	120	25	50
Ø80	95	16	150	12	126	153	30	63
Ø100	115	16	160	14	150	178	35	75

3D CAD 2D CAD 單位(Unit): m/m

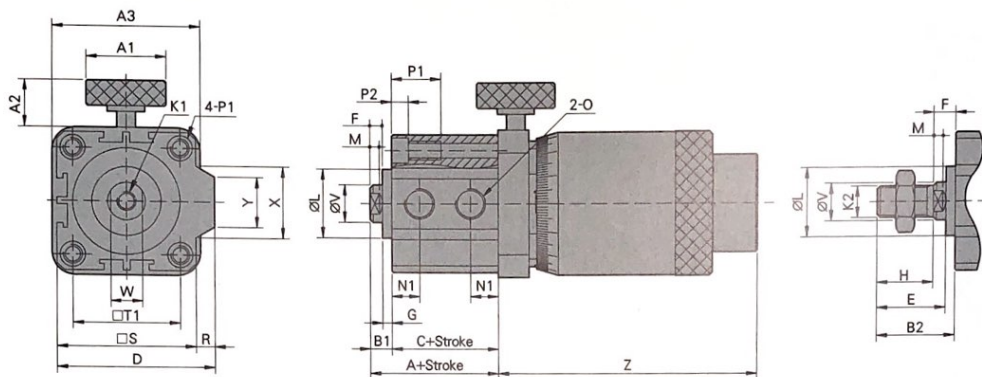
Bore	BD	TD	TL	TM	UW	ZA	ZB	ZC
Ø32	22	12	12	50	58	73	73	73
Ø40	28	16	16	63	70	77	88	82.5
Ø50	32	16	16	75	85	86	94	90
Ø63	35	20	20	90	100	89.5	105.5	97.5
Ø80	40	20	20	110	120	107	113	110
Ø100	45	25	25	132	145	116.5	123.5	120



PÖSU

精密型微調行程氣缸/Precision Adjustable Stroke Cylinder

CJD / CJDR 雙動型/Double acting - standard type $\varnothing 32 \sim \varnothing 100$



* 右列行程之本體長度“C”尺寸相同: (5,10)(15,20)(25,30)(35,40)(45,50)(55,60)
 * The length "C" of cylinder body is same of the stroke: (5, 10)(15,20)(25,30)(35,40)(45,50)(55,60)

3D CAD **2D CAD** 單位(Unit): m/m

Bore	CJD		CJDR		B1	B2	D	E	F	G	H	K1(內牙)	K2(外牙)	L	M	N1
	A	C	A	C												
$\varnothing 32$	31	24	41	34	7	24	50	20.7	3.7	3.3	16	M6×P1.0×14L	M10×P1.25	22	3	9
$\varnothing 40$	33.5	26.5	43.5	36.5	7	34	58.5	30.7	3.7	3.3	25	M8×P1.25×14L	M14×P1.5	28	3	10
$\varnothing 50$	37.6	28.6	47.6	38.6	9	36	71.5	32.1	5.1	3.9	25	M10×P1.5×15L	M18×P1.5	38	3	10.8
$\varnothing 63$	41	32.5	51	42.5	8.5	35.5	84.5	31.6	4.6	3.9	25	M10×P1.5×15L	M18×P1.5	40	3	11
$\varnothing 80$	52	41.3	62	51.3	10.7	43.7	104	38.7	5.7	5	30	M14×P1.5×20L	M22×P1.5	45	4	13
$\varnothing 100$	54	45.3	64	55.3	8.7	41.7	124	38.7	5.7	3	30	M16×P2.0×20L	M22×P1.5	45	4	15

Bore	O	P1	P2	P4	R	S	T1	V	W	X	Y	A1	A2	A3	Z	
															MIN	MAX
$\varnothing 32$	PT 1/8	14	6	$\varnothing 5.1 \times 1 - M6 \times P1.0 \times 8L, \varnothing 8 \times 6L$	6	44	34	12	10	15	13.6	25.4	15.7	47	82	109
$\varnothing 40$	PT 1/8	18	8	$\varnothing 6.8 \times 1 - M8 \times P1.25 \times 10L, \varnothing 10 \times 8L$	6.5	52	40	16	14	15	13.6	25.4	15.7	53.2	91	128
$\varnothing 50$	PT 1/4	18.5	8.5	$\varnothing 6.8 \times 1 - M8 \times P1.25 \times 10L, \varnothing 11 \times 8.5L$	9.5	62	48	20	17	21.6	19	30.5	20	65.2	120	168
$\varnothing 63$	PT 1/4	18.5	8.5	$\varnothing 6.8 \times 1 - M8 \times P1.25 \times 10L, \varnothing 11 \times 8.5L$	9.5	75	60	20	17	32	20.5	35.1	24	75	115	164
$\varnothing 80$	PT 3/8	22.5	10.5	$\varnothing 10.4 \times 1 - M12 \times P1.75 \times 12L, \varnothing 14 \times 10.5L$	10	94	74	25	22	38.8	26.8	35.3	26.2	95.1	115	164
$\varnothing 100$	PT 3/8	28	13	$\varnothing 12.5 \times 1 - M14 \times P2.0 \times 15L, \varnothing 18.5 \times 13L$	10	114	90	25	22	37.3	26.3	35.3	24.1	115	115	164