

P,P2

系列 真空吸盤

series VACUUM PAD



- 特殊盤面構造設計，吸著確實、穩定
- 吸盤的種類豐富，依您的需要可提供您最適當的形狀、材質及尺寸供您按裝
- 膠質部份，更換簡便，便利您於不同作業環境下，迅速更換不同材質之膠質
- Surface structure specially designed to make the suction stable.
- Different types of vacuum pads available. According to your demand, suitable shapes, materials and sizes are provided for installation.
- Glue part easily changable. It is convenient for different operation environment to change the different material of the glue part of the vacuum pads.

真空吸著力之計算 Holding forces calculation:

$$W = \frac{P \times A}{760} \times \frac{1}{f} \times (1.0332)$$

W	吸著能力 Holding force (kgf)	f	安全係數 Safety factor
P	吸著時之真空度 Vacuum (2-mmHg)	水平吸吊f=4以上 Workpiece horizontal f = over 4	
A	吸盤面積 Area of vacuum pads (cm ²)	垂直吸吊f=6~8以上 Workpiece vertical f = over 6 ~ 8	

理論吸著能力表 Theoretical Holding Force

吸盤尺寸 (φ mm) Size of Vacuum pad	2	3.5	2×4	3.5×7	5	6	8	10	15	20	25	30	35	40	50	60	80	95	100	120	150	200
吸盤面積 (cm ²) Area of Vacuum Pad	0.031	0.096	0.072	0.218	0.196	0.282	0.502	0.785	1.767	3.141	4.908	7.068	9.621	12.56	19.63	28.27	50.26	70.88	78.53	113	176.7	314.1
- 700 mmHg	0.029	0.089	0.066	0.2	0.18	0.26	0.46	0.72	1.6	2.9	4.5	6.5	8.9	11.6	18.1	26	46	65	72	104	163	289
- 600 mmHg	0.025	0.076	0.056	0.17	0.16	0.22	0.4	0.62	1.4	2.5	3.9	5.6	7.6	9.9	15.5	22	40	54	62	89	140	248
- 500 mmHg	0.021	0.063	0.047	0.14	0.13	0.19	0.33	0.52	1.2	2.1	3.2	4.7	6.3	8.3	12.9	19	33	47	52	74	116	207
- 400 mmHg	0.017	0.051	0.038	0.12	0.1	0.15	0.26	0.41	0.9	1.7	2.6	3.7	5.1	6.6	10.3	15	26	37	41	60	93	165
- 300 mmHg	0.012	0.038	0.028	0.086	0.08	0.112	0.2	0.31	0.7	1.2	1.9	2.8	3.8	5	7.8	11	20	28	31	45	70	124
- 200 mmHg	0.008	0.025	0.019	0.058	0.05	0.074	0.132	0.21	0.5	0.8	1.3	1.9	2.5	3.3	5.2	7	13	19	21	30	47	83
- 100 mmHg	0.004	0.013	0.009	0.029	0.03	0.037	0.066	0.1	0.2	0.4	0.7	0.9	1.3	1.7	2.6	4	7	9	10	15	23	41

訂購代號 Order No.

P T K 50

註:可單獨訂購吸盤膠質部"G"

PS: The glue part of the suction pads can be ordered separately
例:PG-20-S

- 配管方向
Tubing direction

T	縱向 Vertical
Y	橫向 Transverse

- 衝擊吸收彈簧
Impact absorbed spring

K	無 Without
S	有 Have

- 吸盤尺寸
Size of vacuum pad

2~200	φ 2~200單層 Monoclinal stratum
10~50	φ 10~50雙層 Two layers

- 吸盤材質
Material of vacuum pad

	合成橡膠 NBR
S	矽膠 Silicon
U	PU膠 Urethane

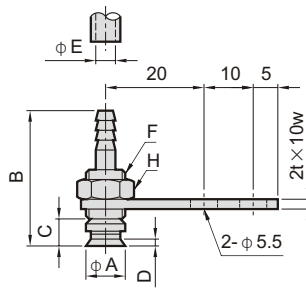
- 吸盤 Vacuum pad

P	單層 Monoclinal stratum
P2	雙層 Two layers

其他配件

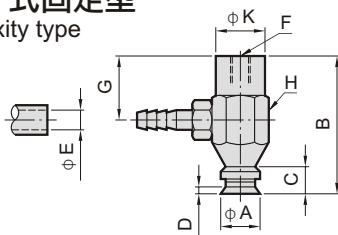
尺寸圖 Dimension.

PTK-2~8 T式固定型
Fixity type



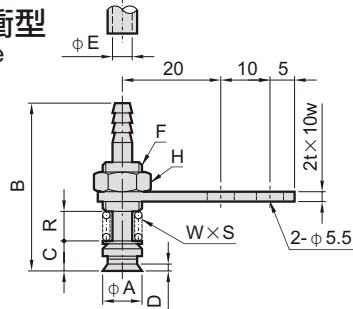
PTK	A	B	C	D	E	F	H
2	2	23.8	0.8	0.4	2.5	M5×P0.5	7
2×4	2×4	24.7	1.7	0.5	2.5	M5×P0.5	7
3.5	3.5	24	1	0.5	2.5	M5×P0.5	7
3.5×7	3.5×7	25.5	2.5	0.8	2.5	M5×P0.5	7
5	5	28	6	0.9	4	M8×P1.25	10
6	6	28	6	1	4	M8×P1.25	10
8	8	27.5	5.5	1.4	4	M8×P1.25	10

PYK-2~8 Y式固定型
Fixity type



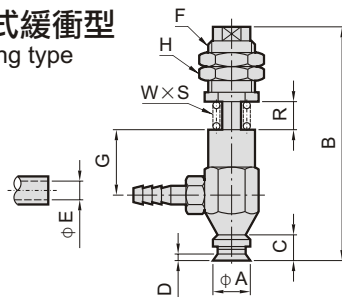
PYK	A	B	C	D	E	F	G	H	K
2	2	20.8	0.8	0.4	2.5	M3×深5	11	5	—
2×4	2×4	21.7	1.7	0.5	2.5	M3×深5	11	5	—
3.5	3.5	21	1	0.5	2.5	M3×深5	11	5	—
3.5×7	3.5×7	22.5	2.5	0.8	2.5	M3×深5	11	5	—
5	5	28.5	4	0.9	4	M4×深6	13	10	10
6	6	28.5	4	1	4	M4×深6	13	10	10
8	8	28	5.5	1.4	4	M4×深6	13	10	10

PTS-2~8 T式緩衝型
Spring type



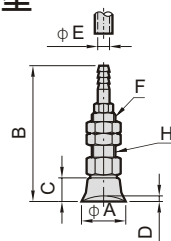
PTS	A	B	C	D	E	F	H	R	W (kgf)	S
2	2	27.8	4.8	0.4	2.5	M5×P0.8	7	5	0.01	2.5
2×4	2×4	28.7	5.7	0.5	2.5	M5×P0.8	7	5	0.08	2.5
3.5	3.5	28	5	0.5	2.5	M5×P0.8	7	5	0.01	2.5
3.5×7	3.5×7	29.5	7.5	0.8	2.5	M5×P0.8	7	5	0.08	2.5
5	5	34.6	6.6	0.9	4	M8×P1.25	10	6	0.1	3
6	6	34.6	6.6	1	4	M8×P1.25	10	6	0.1	3
8	8	34.1	6.1	1.4	4	M8×P1.25	10	6	0.1	3

PYS-2~8 Y式緩衝型
Spring type



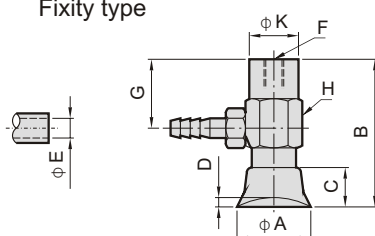
PYS	A	B	C	D	E	F	G	H	R	W (kgf)	S
2	2	36.5	0.8	0.4	2.5	M5×P0.8	11.4	7	4.5	0.01	2.5
2×4	2×4	37.6	1.7	0.5	2.5	M5×P0.8	11.4	7	4.5	0.08	2.5
3.5	3.5	36.9	1	0.5	2.5	M5×P0.8	11.4	7	4.5	0.01	2.5
3.5×7	3.5×7	38.5	2.5	0.8	2.5	M5×P0.8	11.4	7	4.5	0.08	2.5
5	5	50.5	4	0.9	4	M10×P1.5	13	12	6	0.1	3
6	6	50.5	4	1	4	M10×P1.5	13	12	6	0.1	3
8	8	50	5.5	1.4	4	M10×P1.5	13	12	6	0.1	3

PTK-10~50 T式固定型
Fixity type



PTK	A	B	C	D	E	F	H
10	10	46	8	1.3	4	M8×P1.25	10
15	15	46	8	1.9	4	M8×P1.25	10
20	20	48	10	2.3	4	M8×P1.25	10
25	25	62	14	3	4	M10×P1.5	14
30	30	60	12	2	4	M10×P1.5	14
35	35	62	14	3	4	M10×P1.5	14
40	40	62	14	3.5	4	M10×P1.5	14
50	50	63	15	4	4	M10×P1.5	14

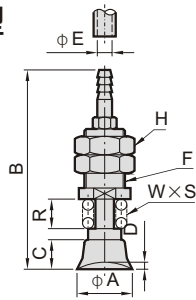
PYK-10~50 Y式固定型
Fixity type



PYK	A	B	C	D	E	F	G	H	K
10	10	30	8	1.3	4	M4×深6	14	10	10
15	15	30	8	1.9	4	M4×深6	14	10	10
20	20	32	10	2.3	4	M4×深6	14	10	10
25	25	46	14	3	4	M6×深8	20	14	12
30	30	44	12	2	4	M6×深8	20	14	12
35	35	46	14	3	4	M6×深8	20	14	12
40	40	46	14	3.5	4	M6×深8	20	14	12
50	50	47	15	4	4	M6×深8	20	14	12

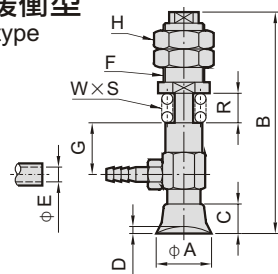
尺寸圖 Dimension.

PTS-10~50 T式緩衝型
Spring type



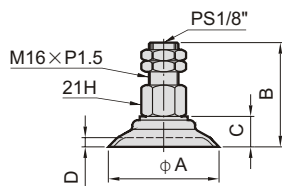
PTS	A	B	C	D	E	F	H	R	W (kgf)	S
10	10	54	8	1.3	4	M11×P1	14	8	0.3	4
15	15	54	8	1.9	4	M11×P1	14	8	0.3	4
20	20	56	10	2.3	4	M11×P1	14	8	0.3	4
25	25	71	14	3	4	M14×P1.5	17	13	0.4	6
30	30	69	12	2	4	M14×P1.5	17	13	0.4	6
35	35	71	14	3	4	M14×P1.5	17	13	0.9	6
40	40	71	14	4	4	M14×P1.5	17	13	0.9	6
50	50	89	15	4	4	M14×P1.5	17	13	0.9	6

PYS-10~50 Y式緩衝型
Spring type



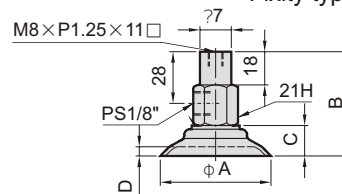
PYS	A	B	C	D	E	F	G	H	R	W (kgf)	S
10	10	60	8	1.3	4	M11×P1	14	14	8	0.3	4
15	15	60	8	1.9	4	M11×P1	14	14	8	0.3	4
20	20	62	10	2.3	4	M11×P1	14	14	8	0.3	4
25	25	87	14	3	4	M14×P1.5	20	17	13	0.4	6
30	30	85	12	2	4	M14×P1.5	20	17	13	0.4	6
35	35	87	14	3	4	M14×P1.5	20	17	13	0.9	6
40	40	87	14	4	4	M14×P1.5	20	17	13	0.9	6
50	50	88	15	4	4	M14×P1.5	20	17	13	0.9	6

PTK-60~95 T式固定型
Fixity type



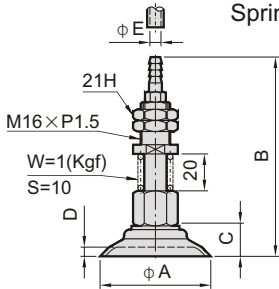
PTK	A	B	C	D
60	60	56.5	16.5	5
80	80	60.6	20.5	6
95	95	61	21	6

PYK-60~95 Y式固定型
Fixity type



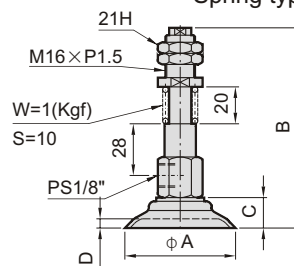
PYK	A	B	C	D
60	60	56.5	16.5	5
80	80	60.6	20.5	6
95	95	61	21	6

PTS-60~95 T式緩衝型
Spring type



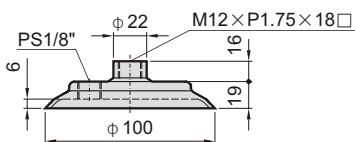
PTS	A	B	C	D	E
60	60	108.5	16.5	5	6
80	80	112.5	20.5	6	6
95	95	113	21	6	6

PYS-60~95 Y式緩衝型
Spring type

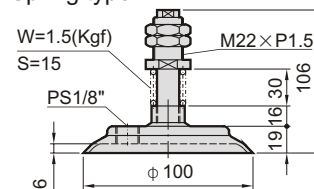


PYS	A	B	C	D
60	60	108.5	16.5	5
80	80	112.5	20.5	6
95	95	113	21	6

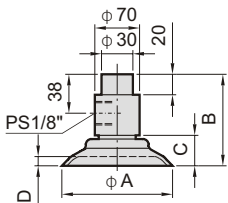
PYK-100 Y式固定型
Fixity type



PYS-100 Y式緩衝型
Spring type

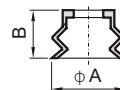


PYK-120~200 Y式固定型
Fixity type



PYK	A	B	C	D
120	120	74	24	6
150	150	87.5	37.5	14.5
200	200	87.5	37.5	13

P2-10~30 雙層吸盤
Two layers vacuum pad



PTK	A	B
10	10	9.5
15	15	11
20	20	13
30	30	18
40	40	18
50	50	20

其他配件