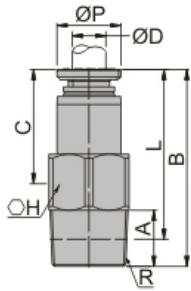


關斷型接頭 Stop Fitting

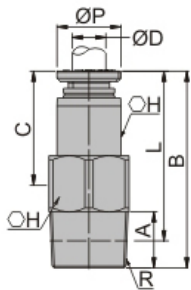
PCS 直型
Straight



\$ P.08 3D CAD 2D CAD 單位(Unit): m/m

Model 型式	Tube dia. 管外徑	ØP	L	B	C	A	R	H	Mass(g) 重量	Orifice 流量孔徑
PCS4-01	4	8	21.1	24.6	14.2	7	PT1/8	10	8.4	2.7
PCS6-01	6	10	23.9	27.2	15.4	7	PT1/8	10	8.8	4.5

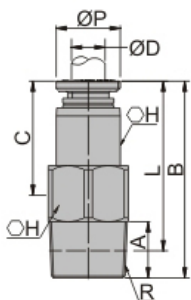
PCS 直型(白)
Straight (Ivory)



\$ P.08 3D CAD 2D CAD 單位(Unit): m/m

Model 型式	Tube dia. 管外徑	ØP	L	B	C	A	R	H	Mass(g) 重量	Orifice 流量孔徑
PCS4-01-W	4	8	21.1	24.6	14.2	7	PT1/8	10	8.4	2.7
PCS6-01-W	6	10	23.9	27.2	15.4	7	PT1/8	10	8.8	4.5

PCS NI 直型
Straight



\$ P.08 3D CAD 2D CAD 單位(Unit): m/m

Model 型式	Tube dia. 管外徑	ØP	L	B	C	A	R	H	Mass(g) 重量	Orifice 流量孔徑
PCS4-01-NI	4	8	20.8	24.3	13.9	7	PT1/8	10	9.3	2.7
PCS6-01-NI	6	10	24.5	26.8	15	7	PT1/8	10	9.6	4.5

備註 Note NI: 金屬脫離環 NI: Release Ring (Metallic Body)