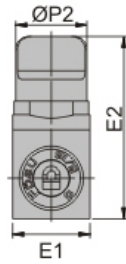
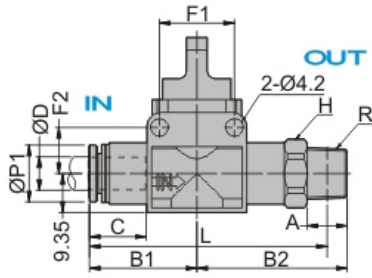


# 手動閥 Hand Valve

## PHV 直式A型 Straight A



\$ P.09

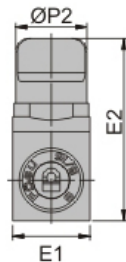
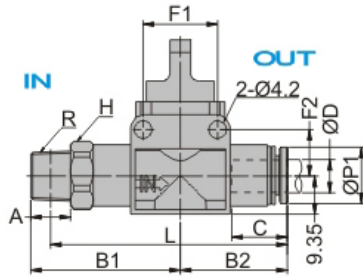
3D CAD

2D CAD

單位(Unit): m/m

Model 型 式	Tube dia. ØD 管外徑	R	A	E1	E2	ØP1	ØP2	C	B1	B2	L	H	F1	F2	Mass(g) 重量	Orifice 流量孔徑
PHV6-01-□-□	6	PT1/8	7	17.8	42	10	18	13.5	25	33	54.5	12	16.4	11	32.5	5
PHV6-02-□-□		PT1/4	9.6							35.6	55.8	14			39	
PHV6-03-□-□		PT3/8	9.6							35.6	55.8	17			51.5	
PHV8-01-□-□	8	PT1/8	7	17.8	42	13.6	18	14.5	29.2	33.5	59.2	15	16.4	11	34	5
PHV8-02-□-□		PT1/4	9.6							36.1	60.5	15			40	
PHV8-03-□-□		PT3/8	9.6							35.1	59.5	17			53	
PHV10-02-□-□	10	PT1/4	9.6	17.8	43	16.7	24	14.7	26.2	35.6	57	19	16.4	11.9	61	7
PHV10-03-□-□		PT3/8	9.6							35.6	57	19			69.5	
PHV10-04-□-□		PT1/2	12							38	58.2	21			91	
PHV12-02-□-□	12	PT1/4	9.6	17.8	43	19.6	24	15.4	26.9	37.1	59.7	21	16.4	11.9	64.5	7
PHV12-03-□-□		PT3/8	9.6							37.1	59.2	21			72.5	
PHV12-04-□-□		PT1/2	12							38.6	59.5	21			94.5	

## PHV 直式B型 Straight B



\$ P.09

3D CAD

2D CAD

單位(Unit): m/m

Model 型 式	Tube dia. ØD 管外徑	R	A	E1	E2	ØP1	ØP2	C	B1	B2	L	H	F1	F2	Mass(g) 重量	Orifice 流量孔徑
PHV01-6-□-□	6	PT1/8	7	17.8	42	10	18	13.5	33		54.5	12	16.4	11	32.5	5
PHV02-6-□-□		PT1/4	9.6						35.6	25	55.8	14			39	
PHV03-6-□-□		PT3/8	9.6						35.6		55.8	17			51.5	
PHV01-8-□-□	8	PT1/8	7	17.8	42	13.6	18	14.5	33.5		59.2	15	16.4	11	34	5
PHV02-8-□-□		PT1/4	9.6						36.1	29.2	60.5	15			40	
PHV03-8-□-□		PT3/8	9.6						35.1		59.5	17			53	
PHV02-10-□-□	10	PT1/4	9.6	17.8	42.9	16.7	24	14.7	35.6		57	19	16.4	11.9	61	7
PHV03-10-□-□		PT3/8	9.6						35.6	26.2	57	19			69.5	
PHV04-10-□-□		PT1/2	12						38		58.2	21			91	
PHV02-12-□-□	12	PT1/4	9.6	17.8	42.9	19.6	24	15.4	37.1		59.7	21	16.4	11.9	64.5	7
PHV03-12-□-□		PT3/8	9.6						37.1	26.9	59.2	21			72.5	
PHV04-12-□-□		PT1/2	12						38.6		59.5	21			94.5	

價格區  
標準接頭  
調速接頭  
金屬調速  
逆止閥  
關斷型接頭  
配管模組  
手動閥  
塑鋼接頭