

# W-3

## 系列 滑動洩壓閥

series HAND SLIDE VALVE

**PÖSU**  
PNEUMATIC

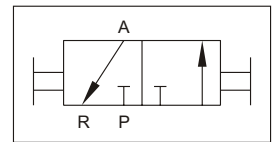


### 規格表

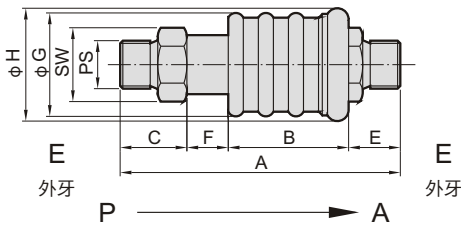
接管口徑 Port thread size	(1/8)	(1/4)	(3/8)	(1/2)
位置數 Port amount	3/2			
使用流體 Used fluid	空氣 Air			
最大流量 Maximum flow (l/min)	530	1000	1100	2500
使用溫度 Ambient temperature (°C)	0 ~ 60			
重量 Weight (g)	40	100	120	280

- 適用於氣壓源及控制迴路，如三點組合之排氣開關。
- Suitable for the pneumatic source and control circuit e.g.
- The air exhausted control of the air combination units.

閥體(3/2) Valve

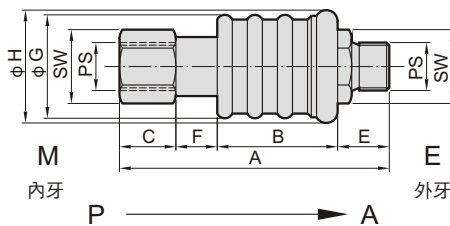


### W-3-□-EE



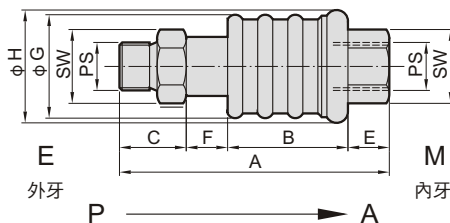
訂購標示 How to order	A	B	C	E	F	G	H	PS	SW
<b>W-3-1/8"-EE</b>	51	25	8.5	9	8.5	21.3	23.8	1/8"	14
<b>W-3-1/4"-EE</b>	74.6	32	17.5	13.8	11	27.5	30	1/4"	17
<b>W-3-3/8"-EE</b>	76	32	18.5	14.5	11	27.5	30	3/8"	19
<b>W-3-1/2"-EE</b>	88.5	43.5	17	14	14	40	44.7	1/2"	26

### W-3-□-ME



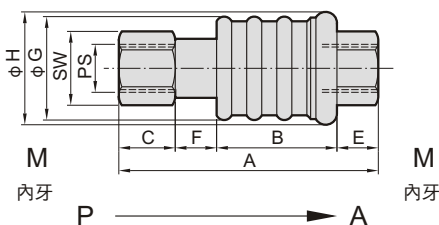
訂購標示 How to order	A	B	C	E	F	G	H	PS	SW
<b>W-3-1/8"-ME</b>	59	25	16.5	9	8.5	21.3	23.8	1/8"	14
<b>W-3-1/4"-ME</b>	71.8	32	15	13.8	11	27.5	30	1/4"	17
<b>W-3-3/8"-ME</b>	72.5	32	15	14.5	11	27.5	30	3/8"	19

### W-3-□-EM



訂購標示 How to order	A	B	C	E	F	G	H	PS	SW
<b>W-3-1/8"-EM</b>	60	25	8.5	18	8.5	21.3	23.8	1/8"	14
<b>W-3-1/4"-EM</b>	71.8	32	17.5	11	11	27.5	30	1/4"	17
<b>W-3-3/8"-EM</b>	72.5	32	18.5	11	11	27.5	30	3/8"	19

### W-3-□-MM



訂購標示 How to order	A	B	C	E	F	G	H	PS	SW
<b>W-3-1/8"-MM</b>	68	25	16.5	18	8.5	21.3	23.8	1/8"	14
<b>W-3-1/4"-MM</b>	69	32	15	11	11	27.5	30	1/4"	17
<b>W-3-3/8"-MM</b>	69	32	15	11	11	27.5	30	3/8"	19