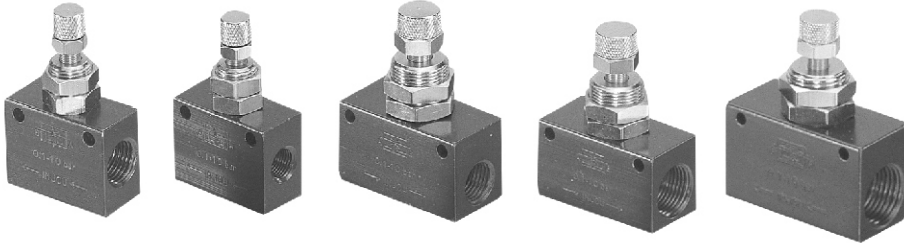


GR, GRO

系列 流量控制閥

PÖSU
PNEUMATIC

series FLOW CONTROL VALVE



- 本體系鋁合金，高微調，控制氣缸活塞之速度以及一般之流量控制。
- The valve is alloy, high hair-spring, also control the cylinder speed and current.

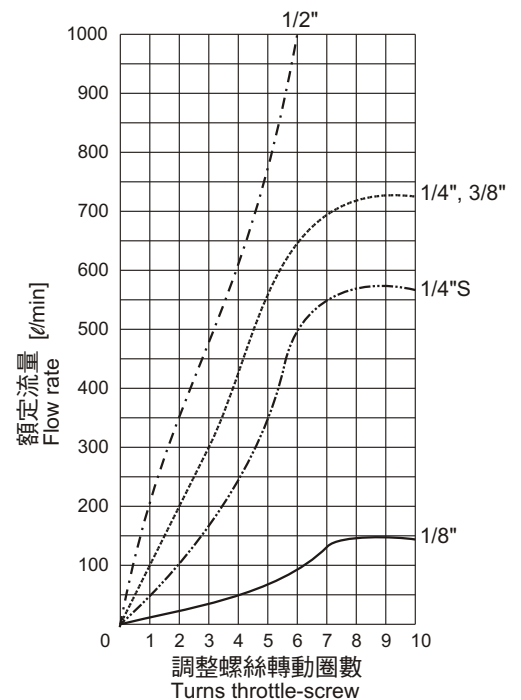
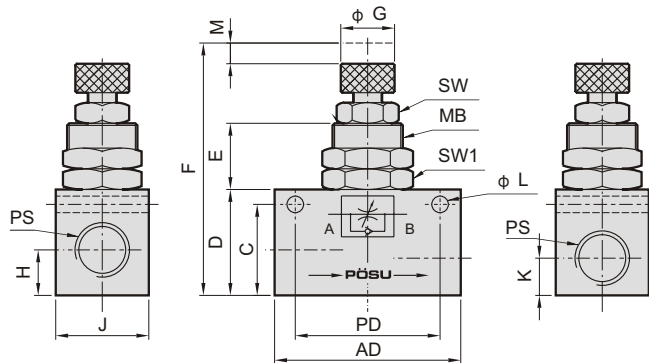
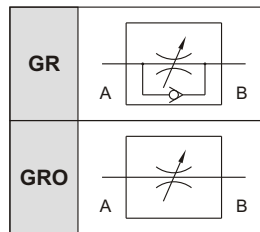
規格表 Specifications

接管口徑 Port thread size		(1/8)	(1/4)S	(1/4)	(3/8)	(1/2)
使用流體 Used fluid		空氣 Air				
GR 最大流量 Maximum discharge (ℓ/min)	A→B	0 ~ 100	0 ~ 650	0 ~ 650	0 ~ 650	0 ~ 1000
	B→A	250	850	1000	1000	1500
GRO 最大流量 Maximum discharge (ℓ/min)	A→B	0 ~ 100		0 ~ 650	0 ~ 650	
	B→A	0 ~ 100		0 ~ 650	0 ~ 650	
使用溫度 Ambient temperature (°C)		0 ~ 60				
重量 Weight (g)		60	40	100	100	180

GR- 單向流量控制閥
One way flow control valve

GRO- 雙向流量控制閥
Two way flow control valve

氣壓符號



訂購標示 How to order		AD	PD	C	D	E	F	G	H	J	K	L	M	MB	PS	SW	SW1
單向 One way	雙向 Two way																
GR-1/8"	GRO-1/8"	35	25	22	26	13	56.5	9	13	16.5	8	4	4.5	M12×P1.0	1/8"	9	14
GR-1/4\"S		35	25	22	26	13	56.5	9	13	16.5	8	4	4.5	M12×P1.0	1/4"	9	14
GR-1/4"	GRO-1/4"	45	35	22	25.5	16	61	13	11	22.5	9	4	5	M17×P1.0	1/4"	13	19
GR-3/8"	GRO-3/8"	45	35	22	25.5	16	61	13	11	22.5	9	4	5	M17×P1.0	3/8"	13	19
GR-1/2"		55	41	29	33	16	71.5	14	12	26	12	4	8	M20×P1.5	1/2"	13	22